

Sayward Rd between Fowler Rd and Pat Bay Highway

November 22, 2020 To November 26, 2020



The data presented here is for information purposes only and should not be considered authoritative for construction, geotechnical, engineering, navigational, legal, or other site-specific uses. The information shared is owned by the Transportation Division of the Engineering Department at the District of Saanich. Accuracy is not guaranteed.

Start Date: 23-Nov-20
 Start Time: 21:00
 Station ID: M0032-01

Location 1: Sayward Rd between Fowler Rd and Pat Bay Highway

Note:

DATE:	November 23, 2020		November 24, 2020		November 25, 2020		November 26, 2020		November 27, 2020		WK AVG		WK AVG	HOURLY
	MON		TUE		WED		THURS		FRI		EB	WB	CH 1+2	%
Time:	EB	WB	EB	WB	EB	WB	EB	WB	EB	WB	EB	WB		
12-1 AM	6	5	2	6	5	4	5	4			5	5	9	0.2%
1-2 AM	1	3	2	3	0	3	1	3			1	3	4	0.1%
2-3 AM	1	2	2	5	3	6	3	6			2	5	7	0.1%
3-4 AM	2	1	1	6	0	2	3	5			2	4	5	0.1%
4-5 AM	3	15	4	11	3	7	1	5			3	10	12	0.2%
5-6 AM	6	26	7	26	8	21	6	24			7	24	31	0.6%
6-7 AM	32	82	37	85	25	88	33	78			32	83	115	2.3%
7-8 AM	122	166	111	160	124	172	127	157			121	164	285	5.8%
8-9 AM	154	206	178	243	175	228	157	212			166	222	388	7.9%
9-10 AM	122	175	144	205	161	190	156	186			146	189	335	6.8%
10-11 AM	138	177	134	149	149	190	137	202			140	180	319	6.5%
11-12 PM	157	212	162	229	145	243	179	214			161	225	385	7.8%
12-1 PM	166	214	149	221	171	269	153	219			160	231	391	7.9%
1-2 PM	149	222	132	213	172	256	166	241			155	233	388	7.9%
2-3 PM	183	244	179	230	202	275	173	308			184	264	449	9.1%
3-4 PM	184	319	173	284	228	340	174	281			190	306	496	10.1%
4-5 PM	215	312	189	277	210	311	232	342			212	311	522	10.6%
5-6 PM	146	168	137	170	139	183	145	184			142	176	318	6.5%
6-7 PM	76	81	75	84	63	92	78	89			73	87	160	3.2%
7-8 PM	33	51	42	60	45	67	51	66			43	61	104	2.1%
8-9 PM	29	44	33	58	41	61	38	58			35	55	91	1.8%
9-10 PM	21	31	16	32	20	29	16	29			18	30	49	1.0%
10-11 PM	17	21	12	20	9	32	16	24			14	24	38	0.8%
11-12 AM	6	14	9	4	8	8	7	7			8	8	16	0.3%
LANES	1969	2791	1930	2781	2106	3077	2057	2944			2016	2898	4914	100.0%
TOTAL	4760		4711		5183		5001				4920			
	MON		TUE		WED		THURS		FRI		WK AVG			

PEAK HOUR					TOTAL VEHICALS-PEAK PERIODS		2 HOUR PEAK INTERVALS					
MAX. 7 - 9 am PEAK HOUR	388	⇒	7.9%	between	8-9 AM	2289	⇒	6 HR TOTAL	2 HR AM (7 - 9 AM)			
MAX. 7 - 11 am PEAK HOUR	388	⇒	7.9%	between	8-9 AM	1513	⇒	4 HR TOTAL	VEH / HR	VEH / 2HR	2 HR %	
									7-8 AM	285	673	13.7%
									8-9 AM	388		
MAX. 11 am - 1 pm PEAK HOUR	391	⇒	7.9%	between	12-1 PM	24 HOUR FACTORS						
MAX. 11 am - 3 pm PEAK HOUR	449	⇒	9.1%	between	2-3 PM							
MAX. 4 - 6 pm PEAK HOUR	522	⇒	10.6%	between	4-5 PM							
MAX. 3 - 6 pm PEAK HOUR	522	⇒	10.6%	between	4-5 PM	2.15	⇒	6-24 HR FACT.	2 HR NOON (11 - 1 PM)			
						3.25	⇒	4-24 HR FACT.	VEH / HR	VEH / 2HR	2 HR %	
									11-12 PM	385	776	15.8%
									12-1 PM	391		
									2 HR PM (4 - 6 PM)			
									VEH / HR	VEH / 2HR	2 HR %	
									4-5 PM	522	840	17.1%
									5-6 PM	318		

Sayward Rd between Fowler Rd and Pat Bay Highway

Westbound

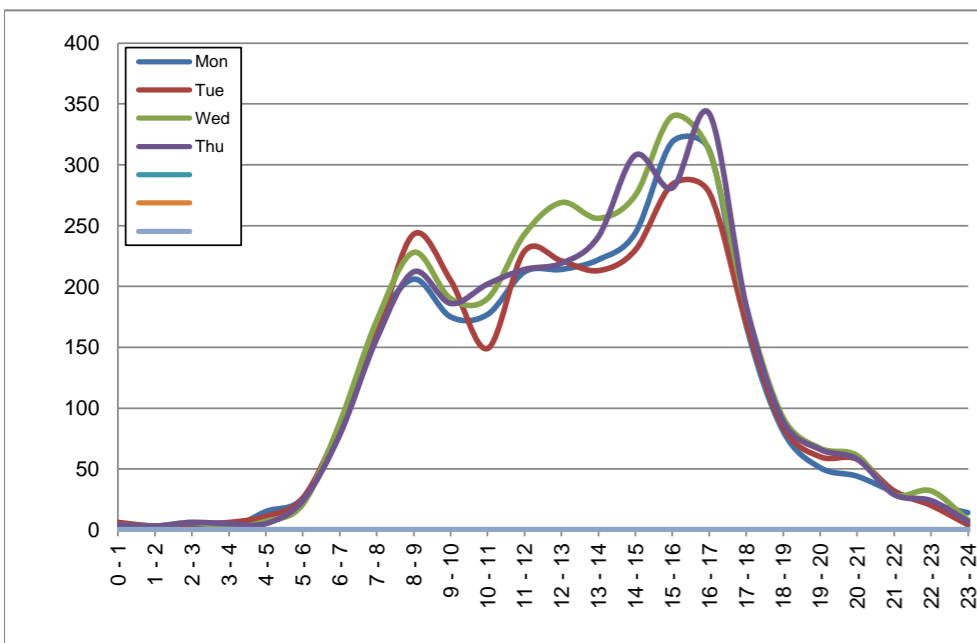
November 23, 2020 to November 26, 2020

Hourly Volumes

Time Period	Mon	Tue	Wed	Thu			
	Nov 23	Nov 24	Nov 25	Nov 26			
0 - 1	5	6	4	4			
1 - 2	3	3	3	3			
2 - 3	2	5	6	6			
3 - 4	1	6	2	5			
4 - 5	15	11	7	5			
5 - 6	26	26	21	24			
6 - 7	82	85	88	78			
7 - 8	166	160	172	157			
8 - 9	206	243	228	212			
9 - 10	175	205	190	186			
10 - 11	177	149	190	202			
11 - 12	212	229	243	214			
12 - 13	214	221	269	219			
13 - 14	222	213	256	241			
14 - 15	244	230	275	308			
15 - 16	319	284	340	281			
16 - 17	312	277	311	342			
17 - 18	168	170	183	184			
18 - 19	81	84	92	89			
19 - 20	51	60	67	66			
20 - 21	44	58	61	58			
21 - 22	31	32	29	29			
22 - 23	21	20	32	24			
23 - 24	14	4	8	7			
Day Total	2791	2781	3077	2944			

15-Minute Volumes

Time Start	Mon	Tue	Wed	Thu			
	Nov 23	Nov 24	Nov 25	Nov 26			
0:00	3	4	2	0			
0:15	1	1	1	2			
0:30	1	1	1	2			
0:45	0	0	0	0			
1:00	1	1	1	1			
1:15	0	0	0	2			
1:30	1	2	0	0			
1:45	1	0	2	0			
2:00	0	2	0	0			
2:15	0	0	1	2			
2:30	1	1	3	3			
2:45	1	2	2	1			
3:00	0	3	0	1			
3:15	0	0	1	0			
3:30	1	1	0	1			
3:45	0	2	1	3			
4:00	3	2	1	2			
4:15	6	0	3	2			
4:30	4	6	2	1			
4:45	2	3	1	0			
5:00	1	8	3	5			
5:15	6	4	6	6			
5:30	6	6	5	7			
5:45	13	8	7	6			
6:00	14	16	18	12			
6:15	19	16	16	19			
6:30	23	29	27	24			
6:45	26	24	27	23			
7:00	19	24	20	18			
7:15	42	34	42	39			
7:30	51	57	62	45			
7:45	54	45	48	55			
8:00	40	48	51	43			
8:15	43	59	54	40			
8:30	65	73	67	59			
8:45	58	63	56	70			
9:00	54	50	63	58			
9:15	44	53	44	33			
9:30	33	55	45	47			
9:45	44	47	38	48			
10:00	43	34	55	48			
10:15	35	36	48	54			
10:30	45	37	36	50			
10:45	54	42	51	50			
11:00	48	46	58	42			
11:15	44	52	62	47			
11:30	58	77	62	52			
11:45	62	54	61	73			
12:00	53	50	69	48			
12:15	51	63	71	56			
12:30	58	49	62	62			
12:45	52	59	67	53			
13:00	56	50	67	57			
13:15	52	50	72	58			
13:30	53	62	65	62			
13:45	61	51	52	64			
14:00	56	57	64	72			
14:15	65	46	63	77			
14:30	58	54	73	71			
14:45	65	73	75	88			
15:00	81	62	73	59			
15:15	85	65	84	61			
15:30	75	80	90	88			
15:45	78	77	93	73			
16:00	85	67	91	83			
16:15	89	73	90	93			
16:30	75	75	68	81			
16:45	63	62	62	85			
17:00	44	48	64	59			
17:15	39	46	43	39			
17:30	54	40	44	42			
17:45	31	36	32	44			
18:00	27	22	27	26			
18:15	25	20	24	19			
18:30	10	21	27	24			
18:45	19	21	14	20			
19:00	18	15	26	16			
19:15	14	15	15	14			
19:30	10	15	13	18			
19:45	9	15	13	18			
20:00	14	15	21	24			
20:15	18	15	20	13			
20:30	5	18	11	13			
20:45	7	10	9	8			
21:00	7	12	7	6			
21:15	10	13	6	11			
21:30	8	3	8	7			
21:45	6	4	8	5			
22:00	8	6	24	7			
22:15	5	3	4	5			
22:30	6	4	2	6			
22:45	2	7	2	6			
23:00	2	0	3	0			
23:15	6	1	0	3			
23:30	3	2	3	0			
23:45	3	1	2	4			



Site notes:

Sayward Rd between Fowler Rd and Pat Bay Highway

Eastbound

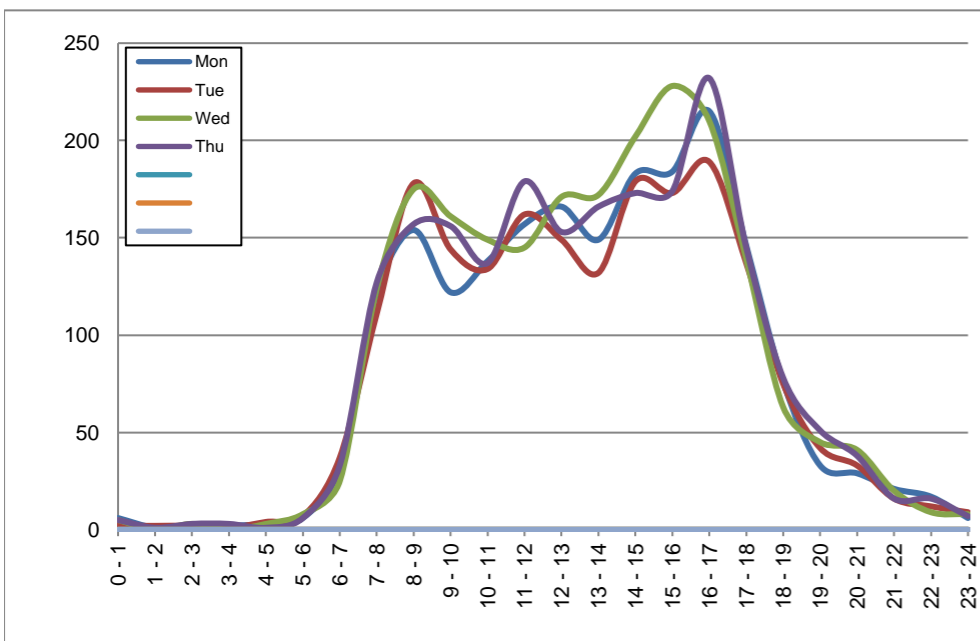
November 23, 2020 to November 26, 2020

Hourly Volumes

Time Period	Mon	Tue	Wed	Thu			
	Nov 23	Nov 24	Nov 25	Nov 26			
0 - 1	6	2	5	5			
1 - 2	1	2	0	1			
2 - 3	1	2	3	3			
3 - 4	2	1	0	3			
4 - 5	3	4	3	1			
5 - 6	6	7	8	6			
6 - 7	32	37	25	33			
7 - 8	122	111	124	127			
8 - 9	154	178	175	157			
9 - 10	122	144	161	156			
10 - 11	138	134	149	137			
11 - 12	157	162	145	179			
12 - 13	166	149	171	153			
13 - 14	149	132	172	166			
14 - 15	183	179	202	173			
15 - 16	184	173	228	174			
16 - 17	215	189	210	232			
17 - 18	146	137	139	145			
18 - 19	76	75	63	78			
19 - 20	33	42	45	51			
20 - 21	29	33	41	38			
21 - 22	21	16	20	16			
22 - 23	17	12	9	16			
23 - 24	6	9	8	7			
Day Total	1969	1930	2106	2057			

15-Minute Volumes

Time Start	Mon	Tue	Wed	Thu				Time Start	Mon	Tue	Wed	Thu			
	Nov 23	Nov 24	Nov 25	Nov 26					Nov 23	Nov 24	Nov 25	Nov 26			
0:00	3	1	1	2				12:00	41	41	48	33			
0:15	0	0	2	2				12:15	41	40	39	44			
0:30	2	1	2	0				12:30	38	37	32	40			
0:45	1	0	0	1				12:45	46	31	52	36			
1:00	0	0	0	1				13:00	34	33	39	45			
1:15	0	0	0	0				13:15	35	26	41	36			
1:30	0	1	0	0				13:30	44	39	46	36			
1:45	1	1	0	0				13:45	36	34	46	49			
2:00	1	2	1	2				14:00	43	37	38	26			
2:15	0	0	0	1				14:15	58	46	49	55			
2:30	0	0	0	0				14:30	44	47	63	54			
2:45	0	0	2	0				14:45	38	49	52	38			
3:00	0	0	0	1				15:00	51	37	56	40			
3:15	1	1	0	1				15:15	46	50	51	43			
3:30	0	0	0	1				15:30	46	46	65	48			
3:45	1	0	0	0				15:45	41	40	56	43			
4:00	0	0	1	0				16:00	53	43	57	55			
4:15	3	1	0	1				16:15	63	42	51	67			
4:30	0	2	0	0				16:30	47	51	48	50			
4:45	0	1	2	0				16:45	52	53	54	60			
5:00	0	1	1	1				17:00	42	44	47	52			
5:15	2	0	2	0				17:15	39	36	39	33			
5:30	1	1	2	3				17:30	38	32	26	29			
5:45	3	5	3	2				17:45	27	25	27	31			
6:00	3	1	2	1				18:00	28	19	14	26			
6:15	7	7	4	6				18:15	18	16	12	19			
6:30	6	7	7	12				18:30	15	23	16	18			
6:45	16	22	12	14				18:45	15	17	21	15			
7:00	22	16	20	29				19:00	8	17	12	15			
7:15	28	24	31	25				19:15	10	10	7	13			
7:30	30	31	33	37				19:30	6	7	15	15			
7:45	42	40	40	36				19:45	9	8	11	8			
8:00	36	36	38	35				20:00	9	12	13	12			
8:15	44	39	45	33				20:15	3	12	11	7			
8:30	38	58	43	53				20:30	5	6	8	13			
8:45	36	45	49	36				20:45	12	3	9	6			
9:00	30	40	48	42				21:00	6	4	9	5			
9:15	32	46	40	46				21:15	4	3	7	6			
9:30	28	27	33	31				21:30	4	7	4	4			
9:45	32	31	40	37				21:45	7	2	0	1			
10:00	33	23	31	24				22:00	5	1	3	3			
10:15	34	39	33	41				22:15	7	5	0	5			
10:30	39	36	35	35				22:30	4	3	2	3			
10:45	32	36	50	37				22:45	1	3	4	5			
11:00	30	40	36	35				23:00	2	4	3	2			
11:15	41	38	35	48				23:15	1	3	1	1			
11:30	37	46	37	42				23:30	2	1	2	1			
11:45	49	38	37	54				23:45	1	1	2	3			



Site notes:

Vehicle Speed Summary

Saanich Engineering Department

Count Id: [M0032-01](#)

Filename: [Sayward Rd between Fowler Rd and Pat Bay Highway-Nov-2020.xlsm](#)

Location: Sayward Rd between Fowler Rd and Pat Bay Highway

Note:

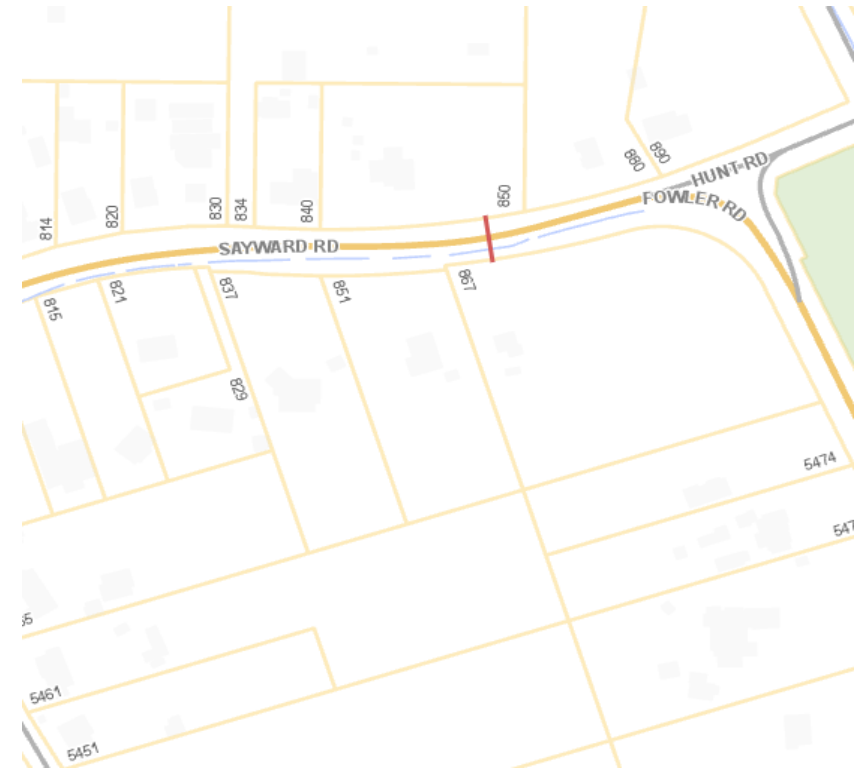
Direction: **East-West**

Dates: **November 22, 2020 To November 26, 2020**

Filtered data

AVG. SPEED	32 mph	51 km/h
50 % SPEED	32 mph	51 km/h
85 % SPEED	35 mph	57 km/h
95 % SPEED	38 mph	61 km/h

Location Map



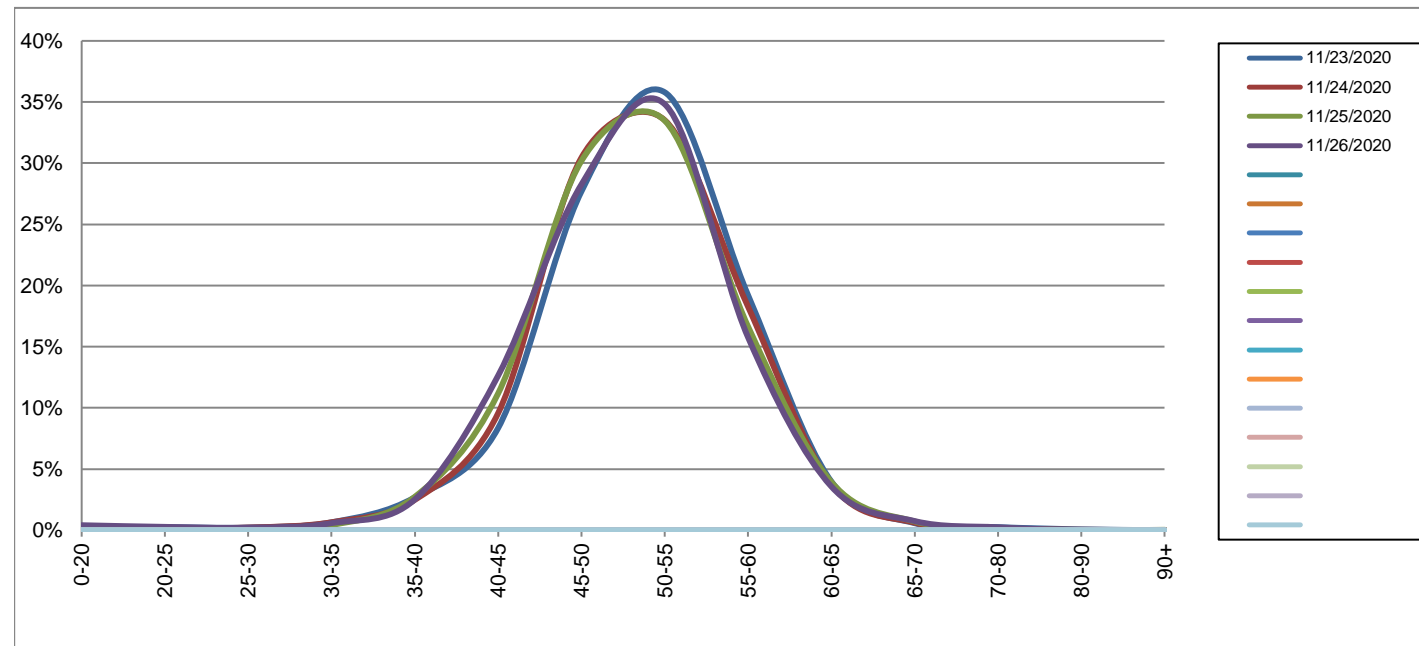
Sayward Rd between Fowler Rd and Pat Bay Highway

Westbound
November 23, 2020 to November 26, 2020

Daily Speed Bin Percentages														Daily Speed Bin Volumes														Total	Avg.	
Bin #	1	2	3	4	5	6	7	8	9	10	11	12	13	14	1	2	3	4	5	6	7	8	9	10	11	12	13	14	Volume	Speed
Bin Speeds	0-20	20-25	25-30	30-35	35-40	40-45	45-50	50-55	55-60	60-65	65-70	70-80	80-90	90+	0-20	20-25	25-30	30-35	35-40	40-45	45-50	50-55	55-60	60-65	65-70	70-80	80-90	90+		
11/23/2020	0.3%	0.3%	0.2%	0.6%	2.7%	8.3%	27.7%	35.8%	19.2%	4.0%	0.6%	0.3%	0.1%	0.0%	8	7	6	18	75	233	773	999	536	111	16	7	2	0	2791	51
11/24/2020	0.1%	0.2%	0.2%	0.6%	2.5%	9.6%	30.5%	33.5%	18.3%	3.7%	0.6%	0.1%	0.0%	0.0%	4	5	6	18	69	266	847	932	508	104	17	4	1	0	2781	51
11/25/2020	0.3%	0.1%	0.1%	0.4%	2.7%	11.2%	30.2%	33.5%	16.6%	3.9%	0.7%	0.2%	0.0%	0.0%	10	4	2	13	84	344	929	1030	512	121	22	5	0	1	3077	51
11/26/2020	0.4%	0.3%	0.2%	0.6%	2.5%	12.6%	28.3%	34.8%	15.8%	3.6%	0.7%	0.2%	0.0%	0.0%	12	8	6	17	74	372	832	1025	464	105	22	7	0	0	2944	50
Total	0.3%	0.2%	0.2%	0.6%	2.6%	10.5%	29.2%	34.4%	17.4%	3.8%	0.7%	0.2%	0.0%	0.0%	34	24	20	66	302	1215	3381	3986	2020	441	77	23	3	1	11593	51

Speed Data Summary

Bin #	1	2	3	4	5	6	7	8	9	10	11	12	13	14	Total
Bin Speeds	0-20	20-25	25-30	30-35	35-40	40-45	45-50	50-55	55-60	60-65	65-70	70-80	80-90	90+	
Survey Total	34	24	20	66	302	1215	3381	3986	2020	441	77	23	3	1	11593
% Total	0.3%	0.2%	0.2%	0.6%	2.6%	10.5%	29.2%	34.4%	17.4%	3.8%	0.7%	0.2%	0.0%	0.0%	100%
Accumulated %	0.3%	0.5%	0.7%	1.2%	3.8%	14.3%	43.5%	77.9%	95.3%	99.1%	99.8%	100.0%	100.0%	100%	
Inverse Accum. %	99.7%	99.5%	99.3%	98.8%	96.2%	85.7%	56.5%	22.1%	4.7%	0.9%	0.2%	0.0%	0.0%	0.0%	
Average Speed	51 KM/H														



Site notes:

Sayward Rd between Fowler Rd and Pat Bay Highway

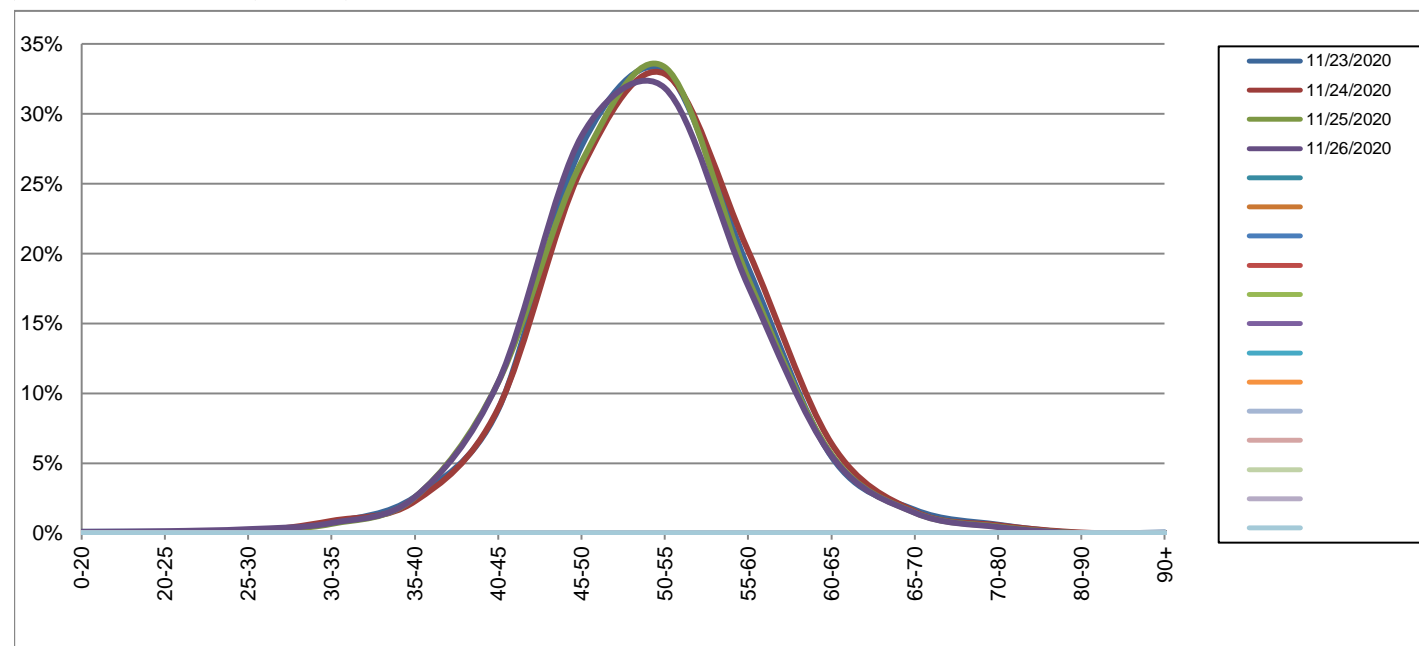
Eastbound

November 23, 2020 to November 26, 2020

Daily Speed Bin Percentages															Daily Speed Bin Volumes														Total	Avg. Speed
Bin #	1	2	3	4	5	6	7	8	9	10	11	12	13	14	1	2	3	4	5	6	7	8	9	10	11	12	13	14		
Bin Speeds	0-20	20-25	25-30	30-35	35-40	40-45	45-50	50-55	55-60	60-65	65-70	70-80	80-90	90+	0-20	20-25	25-30	30-35	35-40	40-45	45-50	50-55	55-60	60-65	65-70	70-80	80-90	90+		
11/23/2020	0.1%	0.1%	0.1%	0.8%	2.6%	8.8%	27.7%	33.1%	19.0%	5.5%	1.7%	0.6%	0.0%	0.1%	2	2	1	15	51	174	545	651	374	108	33	12	0	1	1969	52
11/24/2020	0.1%	0.1%	0.1%	0.9%	2.3%	8.9%	26.1%	32.8%	20.2%	6.4%	1.6%	0.6%	0.1%	0.0%	1	1	2	17	44	172	503	634	390	124	30	11	1	0	1930	52
11/25/2020	0.1%	0.0%	0.2%	0.7%	2.6%	10.8%	26.5%	33.3%	18.2%	5.7%	1.5%	0.5%	0.0%	0.0%	2	0	4	14	54	227	559	702	384	119	31	10	0	0	2106	51
11/26/2020	0.1%	0.1%	0.3%	0.7%	2.6%	10.8%	28.4%	31.8%	17.7%	5.5%	1.5%	0.4%	0.0%	0.0%	2	3	6	15	53	222	584	655	364	114	30	9	0	0	2057	51
Total	0.1%	0.1%	0.2%	0.8%	2.5%	9.9%	27.2%	32.8%	18.8%	5.8%	1.5%	0.5%	0.0%	0.0%	7	6	13	61	202	795	2191	2642	1512	465	124	42	1	1	8062	51

Speed Data Summary

Bin #	1	2	3	4	5	6	7	8	9	10	11	12	13	14	Total
Bin Speeds	0-20	20-25	25-30	30-35	35-40	40-45	45-50	50-55	55-60	60-65	65-70	70-80	80-90	90+	
Survey Total	7	6	13	61	202	795	2191	2642	1512	465	124	42	1	1	8062
% Total	0.1%	0.1%	0.2%	0.8%	2.5%	9.9%	27.2%	32.8%	18.8%	5.8%	1.5%	0.5%	0.0%	0.0%	100%
Accumulated %	0.1%	0.2%	0.3%	1.1%	3.6%	13.4%	40.6%	73.4%	92.1%	97.9%	99.5%	100.0%	100.0%	100%	
Inverse Accum. %	99.9%	99.8%	99.7%	98.9%	96.4%	86.6%	59.4%	26.6%	7.9%	2.1%	0.5%	0.0%	0.0%	0.0%	
Average Speed	51 KM/H														



Site notes:

Sayward Rd between Fowler Rd and Pat Bay Highway

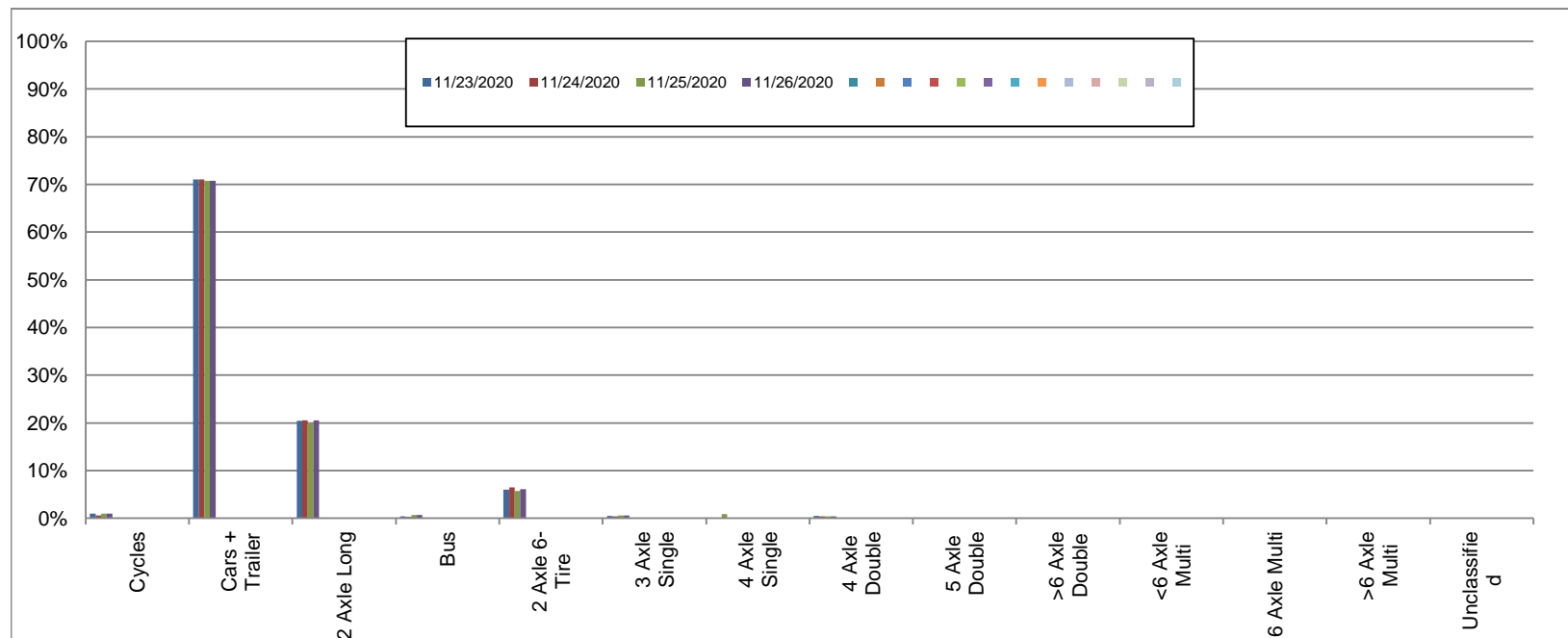
Westbound

November 23, 2020 to November 26, 2020

Daily Class Bin Percentages															Daily Class Bin Volumes														
Bin #	1	2	3	4	5	6	7	8	9	10	11	12	13	14	1	2	3	4	5	6	7	8	9	10	11	12	13	14	Total Volume
Bin Class	Cycles	Cars + Trailer	2 Axle Long	Bus	2 Axle 6-Tire	3 Axle Single	4 Axle Single	4 Axle Double	5 Axle Double	>6 Axle Double	<6 Axle Multi	6 Axle Multi	>6 Axle Multi	Unclassified	Cycles	Cars + Trailer	2 Axle Long	Bus	2 Axle 6-Tire	3 Axle Single	4 Axle Single	4 Axle Double	5 Axle Double	>6 Axle Double	<6 Axle Multi	6 Axle Multi	>6 Axle Multi	Unclassified	
11/23/2020	1.0%	71.0%	20.5%	0.4%	6.0%	0.5%	0.0%	0.5%	0.0%	0.0%	0.0%	0.0%	0.0%	0.1%	27	1982	571	12	168	13	0	13	1	0	0	0	0	4	2791
11/24/2020	0.6%	71.1%	20.5%	0.3%	6.5%	0.4%	0.0%	0.4%	0.1%	0.0%	0.0%	0.0%	0.0%	0.1%	16	1976	570	9	180	12	0	10	3	1	0	0	0	4	2781
11/25/2020	1.0%	70.7%	19.8%	0.7%	5.7%	0.6%	0.9%	0.4%	0.1%	0.0%	0.0%	0.0%	0.0%	0.1%	30	2176	610	21	176	19	28	12	2	1	0	0	0	2	3077
11/26/2020	1.0%	70.8%	20.5%	0.6%	6.0%	0.6%	0.0%	0.4%	0.0%	0.0%	0.0%	0.0%	0.0%	0.1%	29	2083	603	19	178	17	1	11	1	0	0	0	0	2	2944
Total	0.9%	70.9%	20.3%	0.5%	6.1%	0.5%	0.3%	0.4%	0.1%	0.0%	0.0%	0.0%	0.0%	0.1%	102	8217	2354	61	702	61	29	46	7	2	0	0	0	12	11593

Class Data Summary

Bin #	1	2	3	4	5	6	7	8	9	10	11	12	13	14	Total Volume
Bin Class	Cycles	Cars + Trailer	2 Axle Long	Bus	2 Axle 6-Tire	3 Axle Single	4 Axle Single	4 Axle Double	5 Axle Double	>6 Axle Double	<6 Axle Multi	6 Axle Multi	>6 Axle Multi	Unclassified	Total Volume
Survey Total	102	8217	2354	61	702	61	29	46	7	2	0	0	0	12	11593
% Total	0.9%	70.9%	20.3%	0.5%	6.1%	0.5%	0.3%	0.4%	0.1%	0.0%	0.0%	0.0%	0.0%	0.1%	100%
Accumulated %	0.9%	71.8%	92.1%	92.6%	98.6%	99.2%	99.4%	99.8%	99.9%	99.9%	99.9%	99.9%	99.9%	100.0%	
Inv. Accum. %	99.1%	28.2%	7.9%	7.4%	1.4%	0.8%	0.6%	0.2%	0.1%	0.1%	0.1%	0.1%	0.1%	0.0%	



Classification Descriptions

Bin #	Bin Description
1	Motorcycles
2	Passenger cars, including those with recreational trailers
3	2-axle pick-ups, vans, and RVs, including those with recreational trailers
4	Buses
5	2-axle, 6-tire single units
6	3-axle single units
7	4-axle single units
8	3-axle or 4-axle double unit
9	5-axle double unit
10	6-, 7-, or 8-axle double unit
11	5-axle multiple unit
12	6-axle multiple unit
13	7-or-more-axle multiple unit
14	Vehicles that could not be classified

Site notes:

Sayward Rd between Fowler Rd and Pat Bay Highway

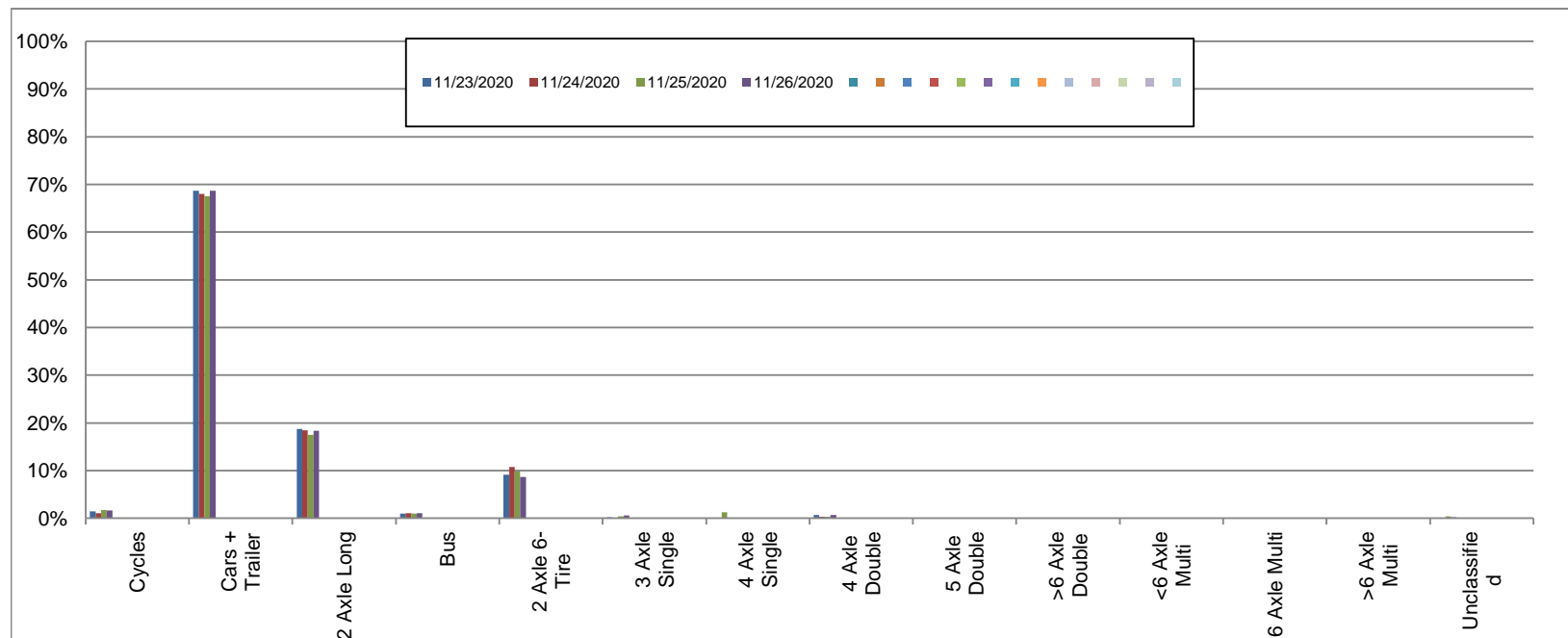
Eastbound

November 23, 2020 to November 26, 2020

Daily Class Bin Percentages															Daily Class Bin Volumes											Total Volume				
Bin #	1	2	3	4	5	6	7	8	9	10	11	12	13	14	1	2	3	4	5	6	7	8	9	10	11		12	13	14	
Bin Class	Cycles	Cars + Trailer	2 Axle Long	Bus	2 Axle 6-Tire	3 Axle Single	4 Axle Single	4 Axle Double	5 Axle Double	>6 Axle Double	<6 Axle Multi	6 Axle Multi	>6 Axle Multi	Unclassified	Cycles	Cars + Trailer	2 Axle Long	Bus	2 Axle 6-Tire	3 Axle Single	4 Axle Single	4 Axle Double	5 Axle Double	>6 Axle Double	<6 Axle Multi	6 Axle Multi	>6 Axle Multi	Unclassified		
11/23/2020	1.4%	68.7%	18.7%	1.0%	9.1%	0.2%	0.0%	0.7%	0.1%	0.0%	0.0%	0.0%	0.0%	0.1%	28	1353	368	19	180	4	0	14	1	0	0	0	0	0	2	1969
11/24/2020	1.1%	68.0%	18.4%	1.0%	10.8%	0.2%	0.0%	0.3%	0.1%	0.0%	0.0%	0.0%	0.0%	0.1%	21	1312	356	20	208	3	0	6	2	0	0	0	0	0	2	1930
11/25/2020	1.8%	67.6%	17.5%	0.9%	9.8%	0.4%	1.2%	0.3%	0.0%	0.0%	0.0%	0.0%	0.0%	0.4%	37	1423	369	20	206	8	26	7	1	1	0	0	0	8	2106	
11/26/2020	1.6%	68.6%	18.3%	1.0%	8.7%	0.6%	0.1%	0.7%	0.1%	0.0%	0.0%	0.0%	0.0%	0.2%	33	1412	377	21	178	12	3	14	2	1	0	0	0	4	2057	
Total	1.5%	68.2%	18.2%	1.0%	9.6%	0.3%	0.4%	0.5%	0.1%	0.0%	0.0%	0.0%	0.0%	0.2%	119	5500	1470	80	772	27	29	41	6	2	0	0	0	16	8062	

Class Data Summary

Bin #	1	2	3	4	5	6	7	8	9	10	11	12	13	14	Total Volume
Bin Class	Cycles	Cars + Trailer	2 Axle Long	Bus	2 Axle 6-Tire	3 Axle Single	4 Axle Single	4 Axle Double	5 Axle Double	>6 Axle Double	<6 Axle Multi	6 Axle Multi	>6 Axle Multi	Unclassified	
Survey Total	119	5500	1470	80	772	27	29	41	6	2	0	0	0	16	8062
% Total	1.5%	68.2%	18.2%	1.0%	9.6%	0.3%	0.4%	0.5%	0.1%	0.0%	0.0%	0.0%	0.0%	0.2%	100%
Accumulated %	1.5%	69.7%	87.9%	88.9%	98.5%	98.8%	99.2%	99.7%	99.8%	99.8%	99.8%	99.8%	99.8%	100.0%	
Inv. Accum. %	98.5%	30.3%	12.1%	11.1%	1.5%	1.2%	0.8%	0.3%	0.2%	0.2%	0.2%	0.2%	0.2%	0.0%	



Classification Descriptions

Bin #	Bin Description
1	Motorcycles
2	Passenger cars, including those with recreational trailers
3	2-axle pick-ups, vans, and RVs, including those with recreational trailers
4	Buses
5	2-axle, 6-tire single units
6	3-axle single units
7	4-axle single units
8	3-axle or 4-axle double unit
9	5-axle double unit
10	6-, 7-, or 8-axle double unit
11	5-axle multiple unit
12	6-axle multiple unit
13	7-or-more-axle multiple unit
14	Vehicles that could not be classified

Site notes: